



Gosforth Terrace
Gateshead
Tyne and Wear
NE10 0RA

Offers In Excess Of £70,000

bettermove

Gosforth Terrace

Gateshead

Bettermove are proud to present this 2 bedroom maisonette in Gateshead available with no forward chain.

The property benefits from double glazing, gas central heating throughout and has on street parking available.

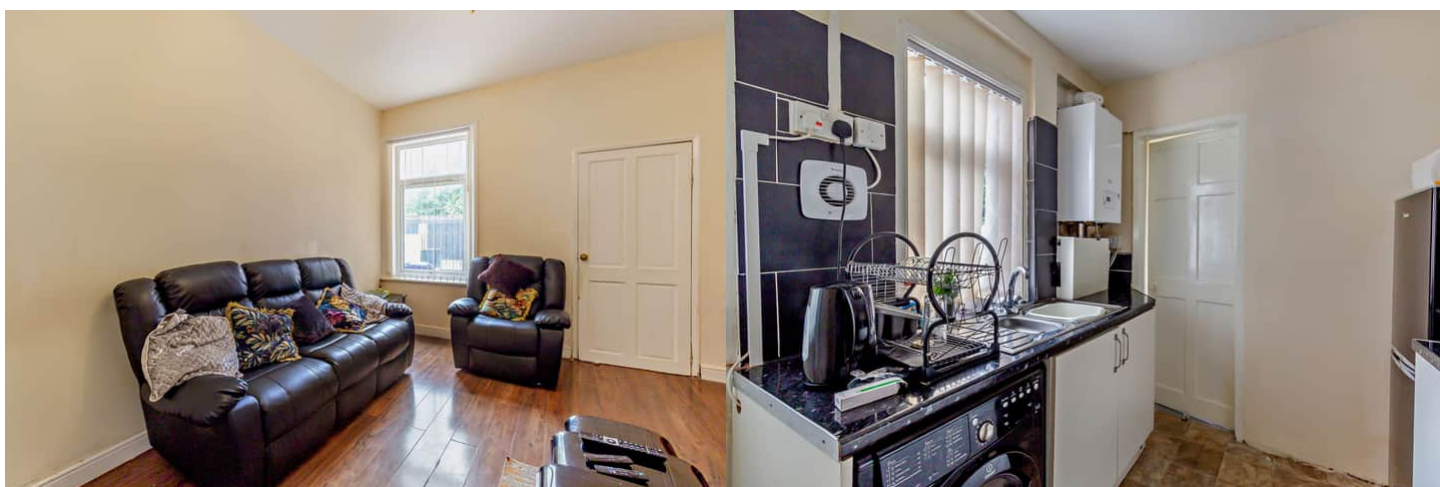
The council tax band is A.

This is a leasehold property with 966 years remaining on the lease; the ground rent is peppercorn.

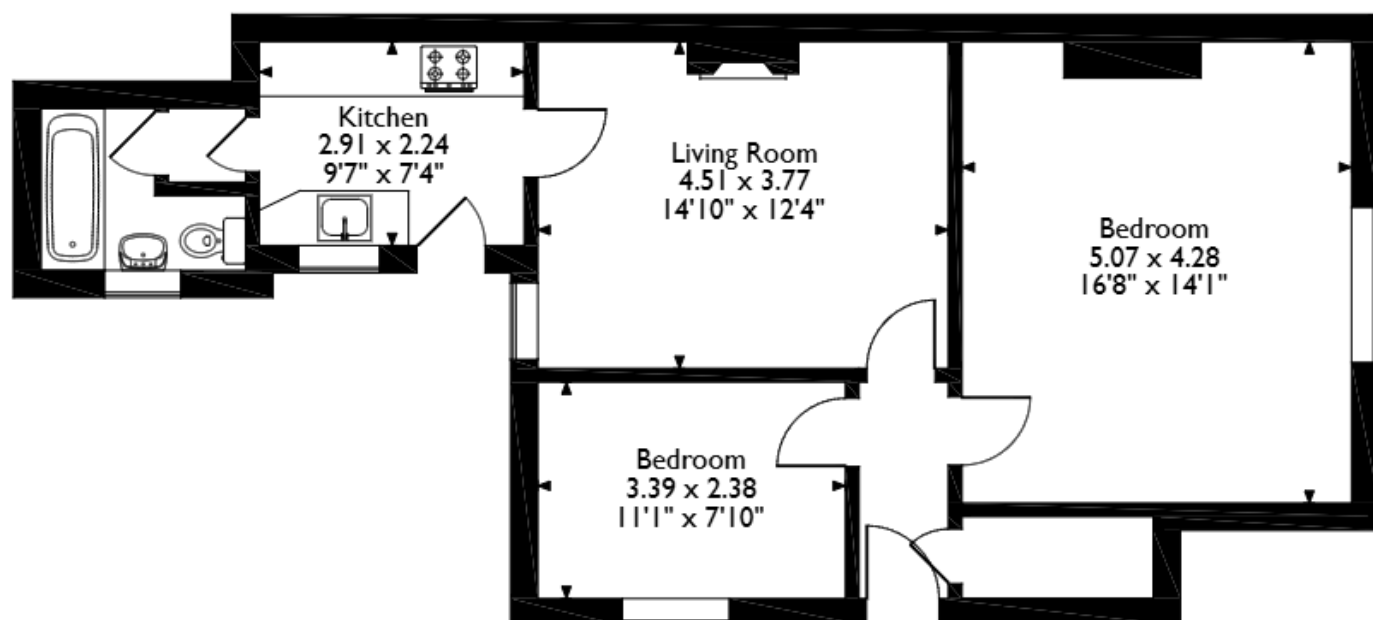
The interior of this beautifully presented property comprises a spacious living room, fitted kitchen, 2 bedrooms and the family bathroom. The exterior boasts a private rear yard, perfect for enjoying the summer months.

Located in the popular town of Gateshead, the property is close to a range of amenities, including shops, supermarkets, restaurants and pubs. Excellent transport connections can be found from the A185, Pelaw underground station and many local bus routes.

This exciting opportunity should not be missed! All enquiries can be made through Bettermove on 0330 004 0050.

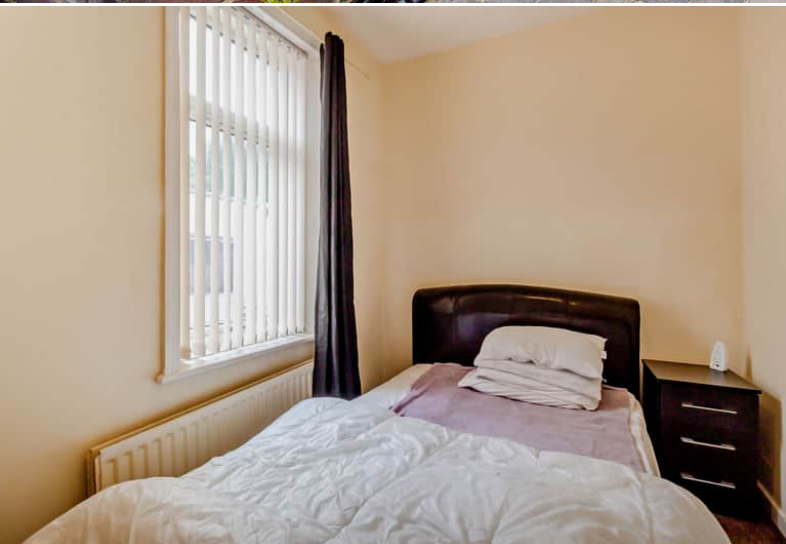


Gosforth Terrace, Gateshead
Approximate Gross Internal Area
64 Sq M/689 Sq Ft



Ground Floor Falt

Please note that the location of doors, windows and other items are approximate and this floorplan is to be used for illustrative purposes only. Unauthorized reproduction is prohibited.



20-22 Bridge End, Leeds, LS1 4DJ
 t: 0330 004 0050 e: hello@bettermove.co.uk
www.bettermove.co.uk

Please Note: These particulars, whilst believed to be accurate are set out as a general outline only for guidance and do not constitute any part of an offer or contract. Intending purchasers should not rely on them as statements of representations of fact, but must satisfy themselves by inspection or otherwise as to their accuracy. No person in this firm's employment has the authority to make or give any representation or warranty in respect of the property.