



Ledwell
Shirley
Solihull
West Midlands
B90 1SL

Offers in Excess of £412,000

bettermove

Ledwell Solihull

Bettermove are proud to present this 4 bedroom detached house in Shirley.

The property benefits from double glazing, gas central heating throughout and has off street parking available via a double garage and driveway.

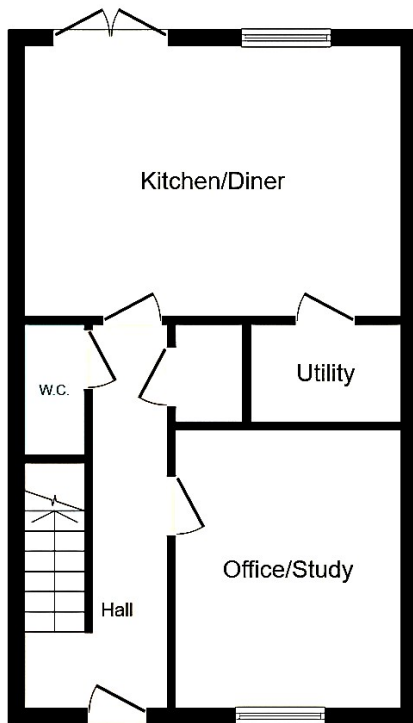
The council tax band is F.

The interior of this beautifully presented property comprises a kitchen/diner, office, utility and WC on the ground floor. The first floor consists of the living room, with the master bedroom and en-suite. The second floor hosts 3 more bedrooms, with an en-suite and the family bathroom. The exterior boasts a private rear garden, with patio and lawned areas, perfect for enjoying the summer months.

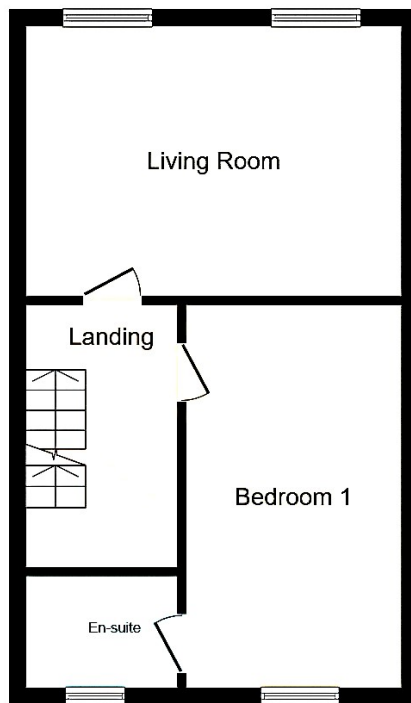
Located in the popular town of Shirley, Solihull, the property is close to a range of amenities, including shops, supermarkets, restaurants and pubs. Excellent transport connections can be found from Whitlocks End, Shirley and Wythall Railway Stations, local bus routes and close access to the M42.

This exciting opportunity should not be missed! All enquiries can be made through Bettermove on 0330 004 0050.

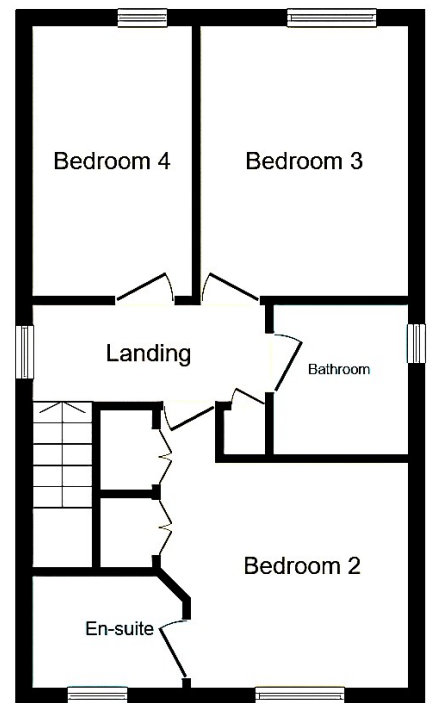




Ground Floor

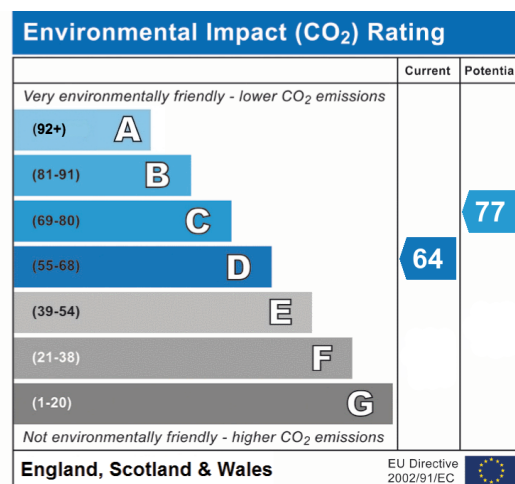
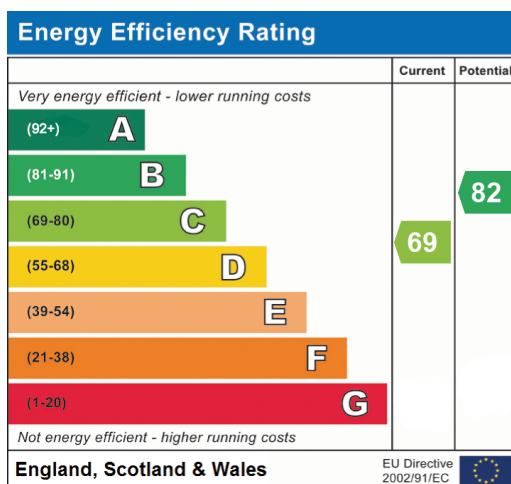


First Floor



Second Floor

This floor plan is for illustrative purposes only. It is not drawn to scale. Any measurements, floor areas (including any total floor area), openings and orientation are approximate. No details are guaranteed, they cannot be relied upon for any purpose and they do not form part of any agreement. No liability is taken for any error, omission or misstatement. A party must rely upon its own inspection(s). Powered by www.focalagent.com





20-22 Bridge End, Leeds, LS1 4DJ
t: 0330 004 0050 e: hello@bettermove.co.uk
www.bettermove.co.uk